



MONTHLY MEMBERSHIP PROGRESS REPORT

District 410 A

Results as of: 03/31/2018

GMT: RASHMI KOOVERJEE

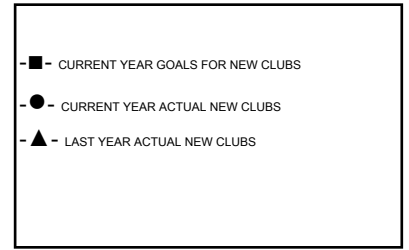
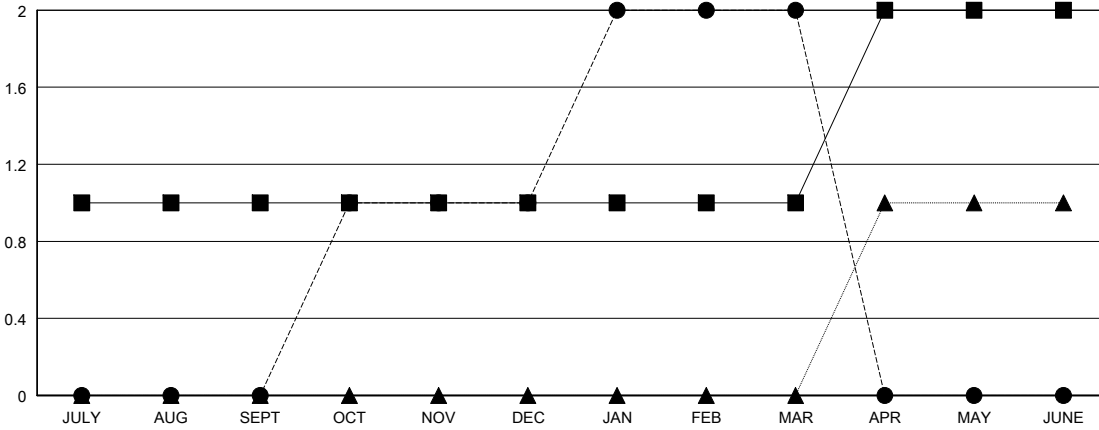
LOCATION REP OF SOUTH AFRICA

GMT CA

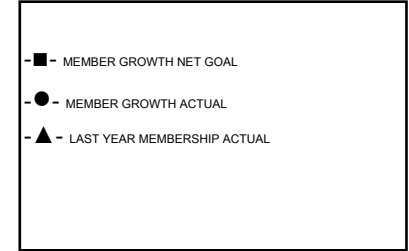
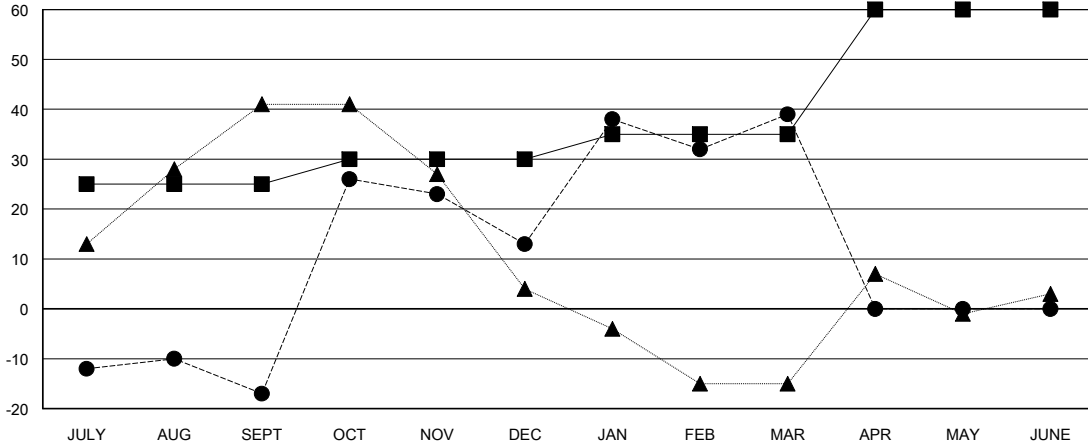
Clubs			
RESULTS FOR 2017-2018			
QUARTER	NEW CLUB GOAL	NEW CLUBS	DROPPED CLUBS
JULY/AUG/SEPT	1	0	0
OCT/NOV/DEC	0	1	0
JAN/FEB/MAR	0	1	0
APR/MAY/JUNE	1	0	0

Members			
RESULTS FOR 2017-2018			
QUARTER	MEMBER GROWTH NET GOAL	MEMBER GROWTH ACTUAL	DROPPED MEMBERS ACTUAL (including transfers)
JULY/AUG/SEPT	25	23	35
OCT/NOV/DEC	5	66	35
JAN/FEB/MAR	5	59	30
APR/MAY/JUNE	25	0	0

GOALS AND ACTUAL NEW CLUBS CUMULATIVE



GOALS AND ACTUAL MEMBERS CUMULATIVE



DROPPED CLUBS: 0	25 CLUBS OF 46 ADDED 1 OR MORE NEW MEMBERS	<u>GENDER DISTRIBUTION</u> MALE 529 (58.26%) FEMALE 379 (41.74%) Women Percentage Fiscal Year Goal: 40%
<u>DROPPED MEMBERS</u> DECEASED 7 CLUB CANCELLED 0 OTHER 93 TOTAL 100	CLICK HERE FOR CUMULATIVE MEMBERSHIP DATA	TOTAL FAMILY UNIT MEMBERS 270 FAMILY MEMBERS PAYING HALF DUES 137